


## Rat VEGF164 Protein, His tag

Cat #: PRP1238

Size: 5 µg/20 µg/100 µg /1 mg

### Product Information

	<b>Product Name:</b> Rat VEGF164 Protein, His tag		
<b>REF</b>	<b>Catalog Number:</b> PRP1238	<b>LOT</b>	<b>Lot Number:</b> Refer to product label
	<b>Purity:</b> > 95 % as determined by SDS-PAGE		
	<b>Storage:</b> Store at -20°C		<b>Preparation method:</b> E.coli
	<b>Shipping:</b> The product is shipped at ambient temperature.		

**Background:** Vascular Endothelial Growth Factor (VEGF) is a sub-family of growth factors produced by cells, which stimulates vasculogenesis and angiogenesis. VEGF's normal function is to create new blood vessels during embryonic development, new blood vessels after injury, muscle following exercise, and new vessels (collateral circulation) to bypass blocked vessels. Mouse and rat express alternately spliced isoforms of 120, 164, and 188 amino acids (a.a.) in length. Rat VEGF164 shares 97% a.a. sequence identity with corresponding regions of mouse, 88% with human and bovine, 89% with porcine and canine, and 90% with feline and equine VEGF, respectively. During pathological neovascularization, both the absolute and relative expression levels for VEGF164 increased to a greater degree than during physiological neovascularization.

**Sequence:** Amino acid sequence derived from Rat VEGF164 (Ala27-Arg190) (P16612-2) was expressed with 6×His Tag.

**Protein length:** The recombinant Rat VEGF164 Protein consists of 164 amino acids and predicts a molecular mass of 19.3 kDa.

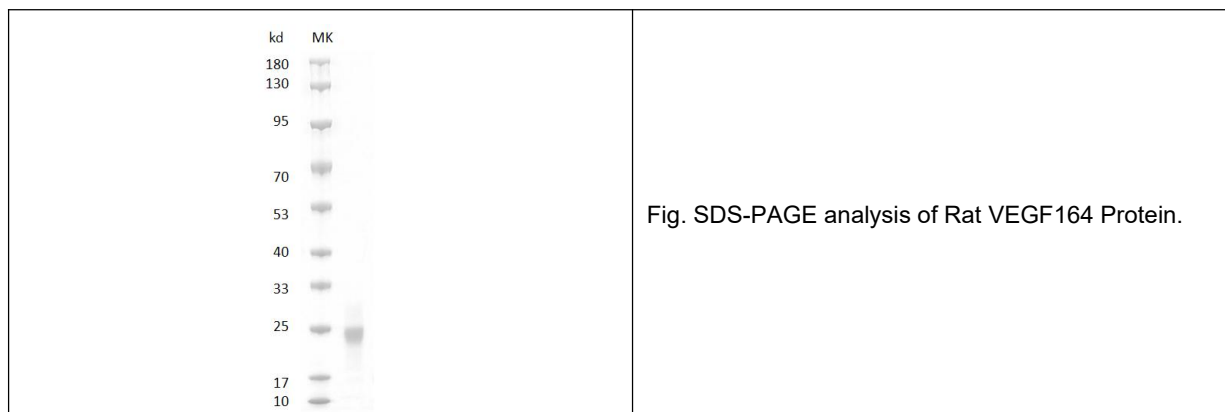
**Biological Activity:** Testing in Progress.

**Endotoxin:** <0.1 EU per µg of the protein by the LAL method.

**Formulation:** Lyophilized from 20 mM Tris-HCl, 50 mM NaCl, pH 8.0.

**Storage Instructions:** Lyophilized protein product should be stored desiccated below -20°C. Upon reconstitution, the protein should be stored at 4°C between 2-7 days and for future use below -20°C. For long term storage it is recommended to add a carrier protein (0.1% HSA or BSA). Please prevent freeze-thaw cycles.

**Usage notes:** Always centrifuge tubes before opening. It is recommended to reconstitute the lyophilized protein using the buffer we provided not less than 100 µg/ml, which can then be further diluted to other aqueous solutions.



**Note:** The product listed herein is for research use only and is not intended for use in human or clinical diagnosis. Suggested applications of our products are not recommendations to use our products in violation of any patent or as a license. We cannot be responsible for patent infringements or other violations that may occur with the use of this product.